



Accurate Sensors Technologies

Highly Accurate On-line Two Color Infrared Focusable Non-contact Pyrometers

€ 450°C to 2300°C

• SWIFT 250C+

SWIFT 250C+ is a highly accurate and very fast digital two color IR Focusable pyrometer to provide high performance and low maintenance of non contact temperature measurement in demanding industrial and R&D environments.

The IR pyrometer has very fast response time, 80 µsec. The parameters can be selected via the key pads on the back panel. The settings are displayed on the OLED Display. In the measuring mode real time temperature is displayed. SWIFT A250C+ has focusable optics for optimal match of the instrument for various applications. It is equipped with RS-485 and analog outputs 0/4-20 mA.

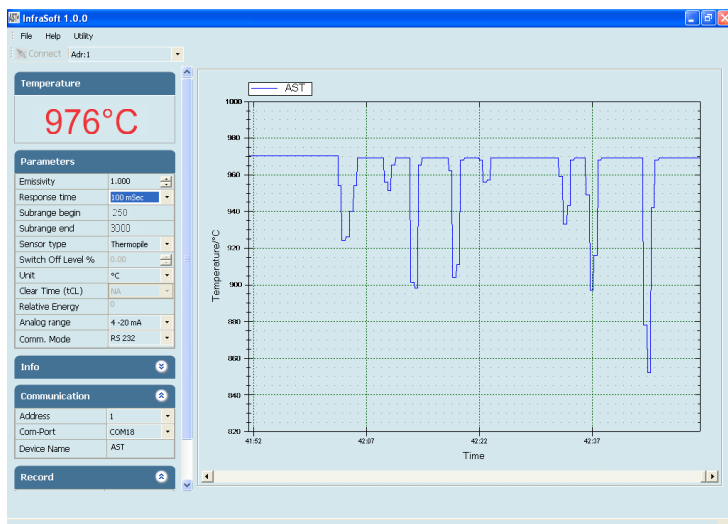


Software "Infrasoft"

AST "Infrasoft" software is under standard scope of supply. It offers parameter setting, view real time graph, offline graph and to evaluate measuring data. Communication between the pyrometer and the software is implemented via a cable connected between the pyrometer and the PC serial. It comes with record feature, spot size calculator and parameter settings features.

Some of the parameters adjustable via software are

- Emissivity, Response Time
- Peak Pickers
- Analog Output
- Sub Range
- Unit of Temperature(°C/°F)



Features

- Wide temperature ranges from 450°C to 2300°C
- Focusable Optics
- Very Fast Response Time - 80 µsec
- Spectral range 1.45...2.0µm
- Integrated OLED Display & Parameterizing Keys
- Laser targeting
- Analog output options 0...20mA, 4...20mA
- RS-485 Interface
- User friendly PC software for communication
- Green LED for pyrometer status indication
- Red LED for Laser ON/OFF indication (PL)

Standard Scope of Supply

- Pyrometer with Focusable optics, OLED Display & Parameterizing Keys
- Laser pilot light(PL)
- Analog output 4...20mA, 0...20mA
- Digital Interface RS-485
- 5 mtr long connection cable with connector
- 1.5 mtr. Communication Cable
- Calibration certificate, Software & Operation manual

Optional

- Mechanical & Electrical Accessories
- Extra Cable Lengths

Applications

- Preheating
- Annealing
- Tempering
- Welding
- Forging
- Hardening
- Melting
- Sintering
- Soldering
- Rolling
- Brazing
- Normalizing

We measure accurate temperature in extreme conditions

Technical Specifications

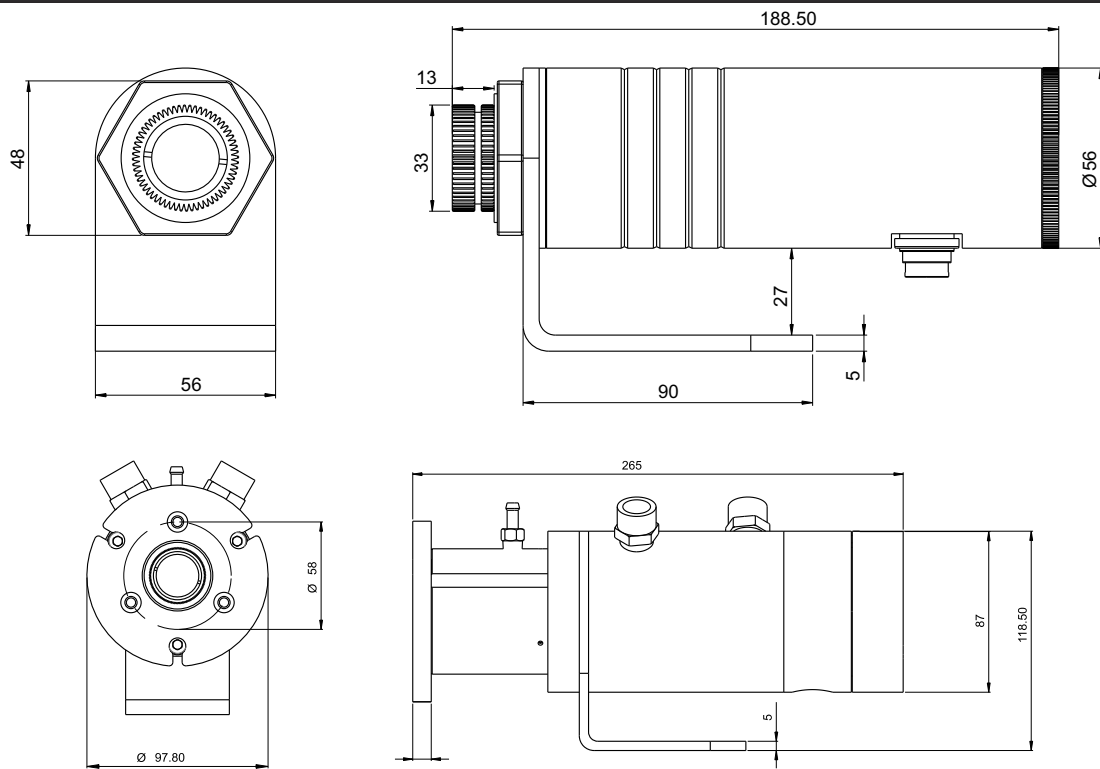
Model	SWIFT 250C+
Temperature Range (Analog sub-range adjustable)	450°C - 1200°C 750°C - 2300°C
Spectral Range	1.45...2.0µm
Distance to Spot Size Ratio	150:1
Emissivity (ε)(For single color)	0.01....1.0
Emissivity Slope(ε1/ε2)(For two color)	0.75....1.25
Response Time (analog t ₉₀)	≤ 80 µsec adjustable upto 10 sec
Sampling Rate	12.5kHz or more
Repeatability	0.2% of reading in °C + 1°C
Resolution	0.1°C (upto 999.9°C), 1.0°C (above 999.9°C)
Sighting Options	Laser Pilot Light(PL)
Analog Output	0-20mA, 4-20mA (User selectable)
Digital Output	RS-485, Ethernet (4 - 20mA Analog Output to Ethernet Converter)
Operating Temp. Range	0°C.....70°C
Storage Temp. Range	-20°C...70°C
Adjustable Parameters and Features via Software	Emissivity, Emissivity Slope, Response Time, Peak Picker, Analog Output, Analog Scale (Sub range), Unit Of Temperature(°C/°F), Record feature etc.
Adjustable Parameters and Features via Keypad	Emissivity, Emissivity Slope, Response Time, Peak Picker, Analog Output, Analog Scale (Sub range), Unit Of Temperature(°C/°F) etc.
Power Supply	12V to 28V DC with reverse voltage protection
Power Consumption	Max 5.0 watt
Laser Power	<1 m watt (only PL model)
Protection Class	IP65
Housing	Stainless Steel
Isolation	Power supply, Digital output and Analog output are galvanically isolated against each other
Operating Humidity	10-95%, Non-Condensing Conditions
Weight & Dimensions	1200g Dia= Ø 56mm; Length=188.5mm

Spot Sizes

Spot Sizes(mm)		
Focused working distances WD (mm)	Length L	AST SWIFT 250C+ PL 450°C - 2300°C (150:1)
500	12.70	3.40
700	8.50	4.70
1000	5.50	6.70
2000	2.30	13.40
5000	0.50	33.40
9000	0	60.00

We measure accurate temperature in extreme conditions

Pyrometer & Cooling Jacket Drawing



Accessories

Mounting Clamp (Pyrometer)
(Reference no: 8500-04)



Air Purge
(Reference no: 8500-05)



Mounting Clamp (Water Cooling Jacket)
(Reference no: 8500-06)



Mounting Flange
(Reference no: 8500-07)



Mounting Plate
(Reference no: 8500-08)



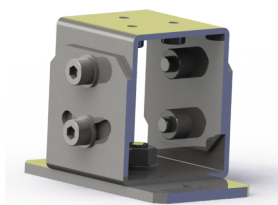
Water Cooling Jacket
(Reference no: 8500-09)



Temperature Indicator
(Reference no: 9000-01)



Adjustable Mounting Stand
(Reference no: 8000-07)



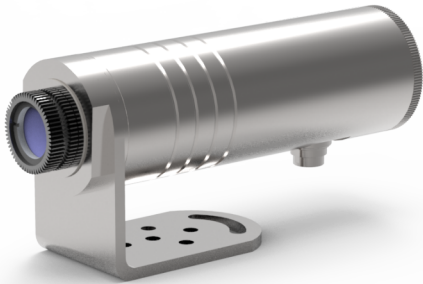
Power supply Input 110/230V AC
Reference No. 9000 - 02
Output 24 V DC, 0.7Amp.



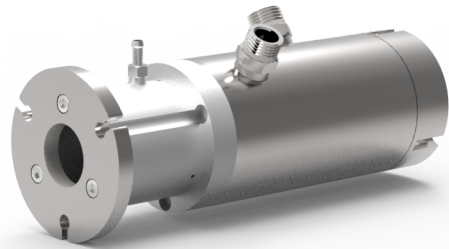
We measure accurate temperature in extreme conditions

Assembly Options

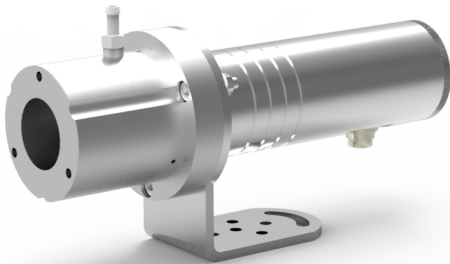
Pyrometer with Mounting Clamp (8500-04)



Pyrometer with Mounting Flange (8500-07) + Air Purge (8500-05) + Water Cooling Jacket (8500-09)



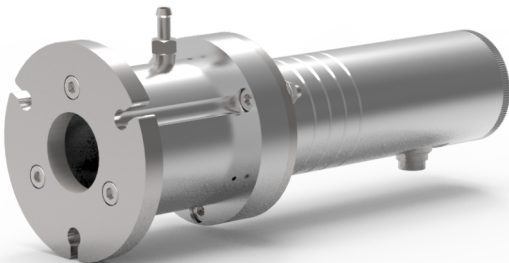
Pyrometer with Air Purge (8500-05) + Mounting Clamp (8500-06)



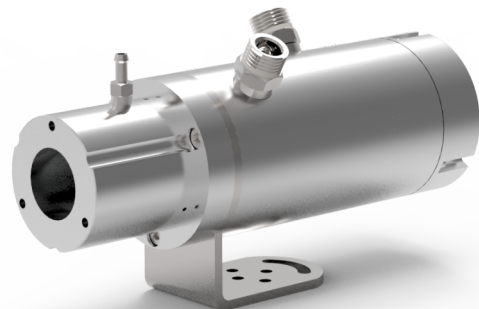
Pyrometer with Water Cooling Jacket (8500-09) + Mounting Clamp (8500-06)



Pyrometer with Mounting Flange (8500-07) + Air Purge (8500-05)



Pyrometer with Mounting Flange (8500-07) + Air Purge (8500-05) + Water Cooling Jacket (8500-09)



Accurate Sensors Technologies Pvt. Ltd.
Misgav Industrial Park, Misgav 20174 Israel
Phone :+972-4-9990025, Fax : +972-4-9990031
E-mail : info@accuratesensors.com

Accurate Sensing Technologies Pvt. Ltd.
188A, B-169 (Part), B-188 (A), Road No. - 5, M. I. A.,
Madri, Udaipur (Rajasthan) - 313003
Phone : +91-294-3507736, Fax : +91-294-3507731
Email : sales@accuratesensors.com

AST
Accurate Sensors Technologies