



TOTAL SENSOR SOLUTION PROVIDERS

 **Pyrosales**
Total Sensor Solutions



We measure it.



CHINO





TOTAL SENSOR SOLUTION PROVIDERS

Pyrosales has established a worldwide reputation as a specialist manufacturer of standard and precision temperature measurement sensors.

We maintain an approved quality management system to ISO9001, which ensures all products provided meet stringent quality requirements. Detailed procedures ensure the products manufactured are always high quality.

Pyrosales design, custom-engineer, and market a comprehensive product range. We also have extensive technical expertise with a dedicated team of sales and support staff.

Our technical expertise, gained from over 40 years of supplying superior service to both Australian and International industry, is the best in Australia.

For more information, visit our website at www.pyrosales.com.au



The Australian industry experts in the design and manufacture of temperature management solutions.

INDUSTRIAL SENSORS (Thermocouples)

IS A Sliding compression fitting

IS B Nipple

IS C Nipple/Union/Nipple

IS D Spring loaded adaptor

IS I Spring loaded nipple

IS M Ex'd'

FOOD INDUSTRY SENSORS

IS N Tri-Clover sanitary seal

IS O Loose nut seal

IS P Stab probe

IS Q BSM nut sanitary seal

GENERAL PURPOSE SENSORS

GP A Sensor with extension lead

GP B Sensor with tails

GP C Sensor with plug

GP D Sensor with hex nipple

GP E Pad type sensor

GP F Spring loaded sensor

GP G Spring loaded sensor

GP H Universal thermocouple

GP I Bare wire thermocouple

HIGH TEMPERATURE SENSORS

IS F Right angle

IS G Ceramic sheath

IS H Fabricated pipe

SENSORS

THERMOWELLS (Manufactured to your specifications)

TW-SP/TW-SPF Parallel machined or fabricated



TW-ST Tapered



TW-SS/TW-SSF Step down machined or fabricated



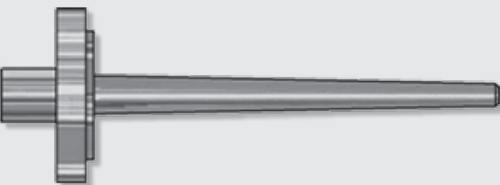
TW-ST* *Tapered c/w lagging extension



TW-WT Weld-in

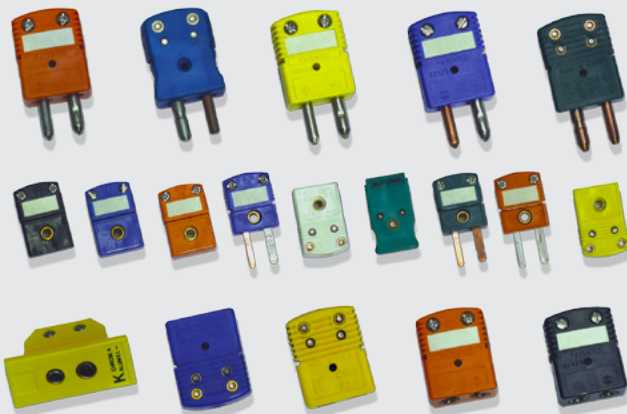


TW-FT Flanged



PLUGS AND JACKS

- Standard and high temperature
- Miniature
- Panel mount jack
- Ceramic Material



TAPE INSULATIONS

Max Temp °C

- TFE/TFE 260
- Polyimide/Twisted 316
- Polyimide/Polyimide 316

BRAIDED INSULATIONS

Max Temp °C

- SERVTEX™/SERVTEX 288
- Vitreous Silica/Vitrious Silica ... 982
- Glass/Glass 482
- Enamel/Glass/Glass 482
- Glass/Glass 482
- Glass/Glass 482
- Glass/Twisted 704
- Glass/Glass 704
- Ceramic Fibre/Ceramic Fibre .. 1204



EXTRUDED INSULATIONS

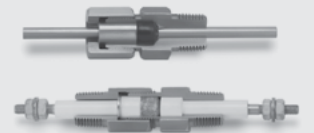
Max Temp °C

- PVC/PVC 105
- PVC/Ripcord 105
- FEP/FEP 204
- FEP/Shield/FEP 204
- PVC/Shield/PVC 105
- Tefzel™/Tefzel™ 150

MULTIPAIR CABLES IN ALL CALIBRATIONS AVAILABLE ON REQUEST

CONAX - COMPRESSION SEAL FITTINGS

Conax
TECHNOLOGIES



- Soft sealant technology provides secure compression seal
- Continuous tension in the torqued body acts like a spring to maintain compression on the sealant and maintain a positive seal throughout the temperature cycle
- Soft sealant technology allows replacement and adjustment of the sealed element. Not possible with epoxy and glass-to-metal sealing
- No leakage
- Conax uses mechanical fittings with internal sealant material that is compressed for a completely tight fit
- Replaceable sealant used in Conax Technologies sealing assemblies allows repeated use of the same fitting
- Replacement sealants are available in Neoprene, Viton, Teflon, Lava or Grafoil, depending on the sealing assembly type



LEVEL

Screwed continuous level transmitter



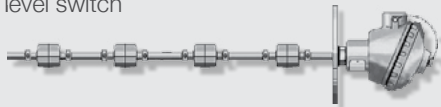
Flanged continuous level transmitter



Screwed multi-float level switch

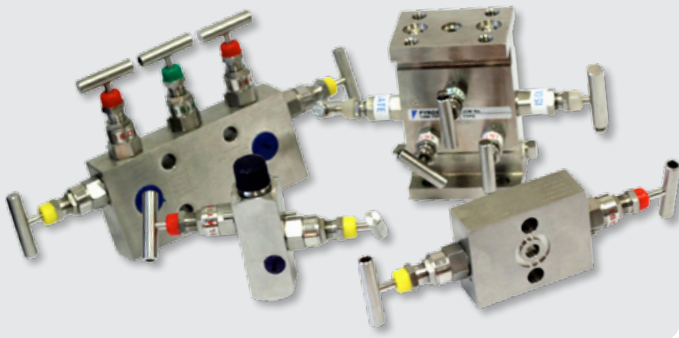


Flanged multi-float level switch



MANIFOLDS AND VALVES

- Block and bleed
- 2, 3, and 5 valve



PRESSURE

- Bourdon pressure gauge
- Chemical seal
- Diaphragm seal
- Capsule seal
- Safety pattern
- Pressure switches
- Differential pressure gauges



SPECIAL PROTECTION SHEATHS



Max Temp °C

- Alsint (Re-crystallised alumina) 1600
- Pythagoras 1500
- Sillimantin 1600
- Metal ceramic (PyroSheath LT-1)
Copper, lead, brass, zinc and sulphurous gases 1375
- Hexoloy®
Corrosion/erosion resistant to 1900
- Sialon
Aluminium applications 1250
- Series 1100
Aluminium, zinc, and galvanising applications 740

PRESSURE, FLOW, MANIFOLDS & VALVES

FLOW

- Orifice plates
- Restriction orifice
- Integral orifice
- Flow Nozzles
- Venturies
- Pitot tubes



GRAPHIC RECORDER KR3000 SERIES

The KR3000 Series are easy to operate, network-compatible, paperless recorders with high visibility 12.1" TFT colour LCD display and touch panel operation system.

- Large-sized, high visibility display with various display functions
- Combination display for selected 4 screens is available
- Large capacity of data memory and various recording methods
- High-speed recording of approximately 100ms for 48 points and high accuracy of $\pm 0.1\%$
- Monitor via web browser on multiple computers, FTP transfer of data and email notification
- Multi-point recording with high speed/high accuracy



TP-L SERIES

Thermal Imaging Sensor

The TP-L series is a compact, mountable, thermal imaging sensor utilising a thermopile array detector.

- Easy-to-use and implement
- 2000 pixel resolution
- Builtin alarms
- IP65.NEMA4



C800/R800 SERIES

Standard resistance thermometers and standard thermocouples for calibration of thermocouples.



HAND HELD INSTRUMENTS

Right angle surface probe



Immersion / stab probe



Surface probe



EMT888 Electronic dual sensor thermometer

TES 1314 Hand-held infrared and thermocouple 0-500°C



Digital thermometer Single or dual channel

FIRE SURVIVAL MI CABLE



Mineral Insulated (MI) cable provides the highest degree of fire protection for emergency back-up power supply systems, emergency equipment, and fire alarm systems. In the event of a fire, electrical power and communication is preserved for critical, life safety circuits.



MICC GROUP
cables for life

MI Cable allows essential safety mechanisms, such as fire pumps, smoke extraction fans, emergency lighting, exit signs and voice communication systems, to remain in operation during a fire, allowing for safe evacuation and more efficient firefighting.

We measure it. **testo**

ENTRY LEVEL/MID-RANGE THERMAL IMAGING CAMERAS

Testo has a history of offering the best quality measuring solutions at prices that don't break the bank.

The 868, 871 and 872 are great value thermal imagers that offer plenty of functionality. Each model has, a measuring range from -30°C to $+650^{\circ}\text{C}$, high resolution and image quality, wireless connectivity to Android and iOS apps for fast download of images to your device and automatic sensing of emissivity.

Testo ScaleAssist automatically sets the optimum thermal image scale which prevents interpretation errors and makes infrared images comparable in spite of altered ambient conditions.

The testo 871 and testo 872 can be additionally connected wirelessly with testo 770-3 Clampmeter. This allows fast and clear identification of where exactly what load a switching cabinet is running.



PROFESSIONAL CLASS THERMAL IMAGING CAMERAS

For more advanced requirements the Testo 882 (IR resolution 320 x 240) and 890 (IR Resolution 640 x 480) offer high infrared resolution and lower thermal sensitivity to identify even the smallest change in temperature.

They offer special measuring modes including moisture image or high temperature option which make them ideal for a wide variety of applications.

Great for the building sector, water damage restoration, maintenance of mechanical and electrical installations, precise high-temperature measurements, prevention of mould, plus more.





RKC

SB1



SB1 is a 1 channel temperature controller with built-in solid state relay (SSR) designed for flexible heating solutions, such as heat trace of pipelines (by controlling jacket heater etc.). Instrument can be wired directly to heaters.

- Direct connection to Load (with built-in SSR)
- Can be installed in a small space or into a pipe
- Easy connection (with a complete connector)
- Power saving by SB link
- Load Power Shutoff Function and Fuse

HA SERIES

Resin Pressure Digital Controller 930 and Extruder.

The HA930 strain gauge input make it ideal for melt pressure control. Featuring high speed sampling and control at 0.025 seconds (40Hz), PID parameters set in 1/100 unit, these controllers provide stable control for improved quality of extruded products.

- Ultra high-speed sampling 0.025 sec
- Pressure and temperature control with a single instrument
- 7 inputs and 5 outputs
- RKC IR software to enable a controller parameter setup with PDA



FB SERIES

The FB Series is a high-performance process controller, with a more advanced Brilliant II PID, auto-tuning, advanced tuning, selectable sampling cycle time of 0.05 / 0.1 / 0.25 seconds and 0.1% of accuracy in short-depth housing.



CB/RB SERIES The CB/RB Series is a state-of-the-art, user-friendly temperature controller.

- RKC self-tuning
- Stable control (0.3% measurement accuracy)
- Clear and easy-to-read large LED screen
- RUN/STOP, RAMP/SOAK functions
- Digital communications RS-485
- Dustproof and waterproof structure IP66 (IP65)

SA100/SA200

RKC's SA 100/200 is a single loop controller which can be simply mounted on a DIN rail with a rail mounting socket or panel mounting frame.

- Self-tuning and auto-tuning
- Heat/cool PID action
- Can communicate digitally with both MODBUS and RKC protocols
- Retransmission output
- Heater break, loop break alarm
- Temperature alarms



PF900

The PF900 is a ramp/soak process and high performance temperature controller with large memory (stores up to 1024 segments). Connect up to 3 analogue outputs for controlling devices, such as motorised valves.

- New control algorithm RSS (Ramp Soak Stabilizer)
- Maximum of 3 point program pattern outputs
- The PF900 can store up to 1024 segments
- High intensity display
- Two types of signal modes
- Satisfies versatile applications
- Memory group
- Collaborative program operation (Inter-controller communication)
- Front loader interface + Programming tool



BRANDS



S-Products b.v.

Analogue and digital temperature transmitters, all with a 5-year Warranty. Available in either a 'hockey-puck' style or in a 'Din-rail' mount package. Optional digital indicator on the programmable transmitters.



CALIBRATORS

High quality, hand-held industrial calibrators for every application.

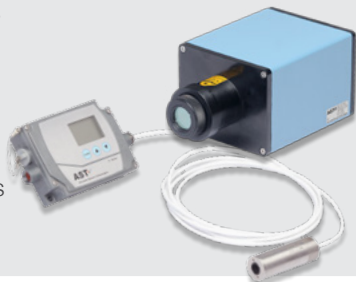
- Milliamp Source and Read
- Multifunction calibrator
- Temperature sensor source and read



INFRARED RADIATION THERMOMETERS

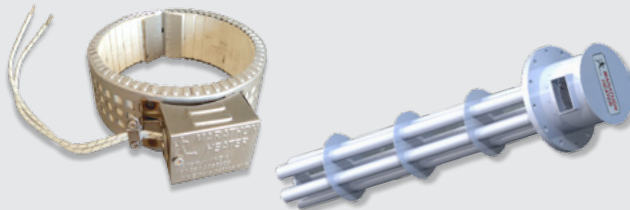
Infrared radiation (IR) thermometers measure temperature without contact. The object being measured essentially broadcasts information about its temperature constantly.

- Single Colour Pyrometers
- Two Colour Pyrometers
- Focusable Pyrometers
- Fibre Optic Pyrometers
- Special Pyrometers
- Software and accessories



PROCESS HEATERS

Process heaters are available in a variety of types, to suit a wide range of applications. Our range includes cartridge heaters, band heaters, coil heaters, strip heaters, flexible tubular heaters and box heaters.



BRANDS

NAGMAN

Quality calibration and testing equipment, including black body systems, stirred baths, dry block calibrators, pressure testers and dead weight testers.



We measure it.

DATA LOGGING

Testo offers an extensive range of user-friendly data loggers for the monitoring of temperature and humidity. The range includes mini temperature data loggers, USB data loggers for logistics and stand alone compact data loggers to be used in various applications. Continuous monitoring solutions available – wireless and WIFI Cloud options from any device.



THE HAWK-EYE 800

- Onsite and remote monitoring, control and data recording
- Suitable for small to medium applications
- 8 configurable analogue inputs, 4 derived inputs, tough IP65 enclosure, built in 10.6" high colour, high resolution touch screen and perceptive software
- The Hawk - Eye 800 is available in 3 models and can be made to your specifications



VICTORIAN OFFICE

Factory 4, Enterprise Way,
Bayswater, VIC 3153

PO Box 553, Bayswater, VIC 3153 Australia
T (03) 9729 2100 F (03) 9720 5559
vicsales@pyrosales.com.au

HEAD OFFICE

4 Wordie Place,
Padstow NSW 2211

PO Box 309, Padstow, NSW 2211 Australia
T (02) 9790 1988 F (02) 9790 1040
sales@pyrosales.com.au

QUEENSLAND OFFICE

Unit 1, (Lot3), 70 Flanders Street
Salisbury QLD 4107

PO Box 182, Salisbury QLD 4107 Australia
T (07) 3277 9400 F (07) 3277 9495
qldsales@pyrosales.com.au