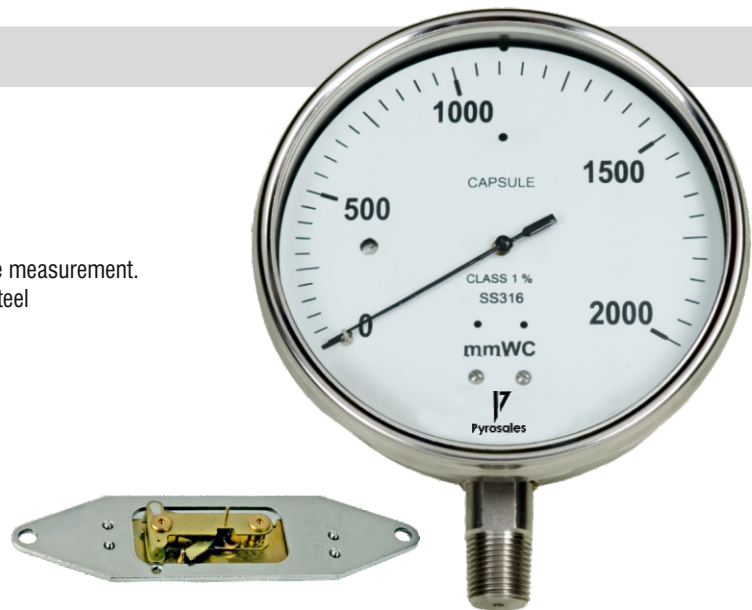


Capsule Sensing Pressure Gauges

MODEL : CSPG

Features

- Low range with high accuracy
- All SS internals
- Accuracy $\pm 1\%$ FSD
- Compact design avoids use of bulky manometers
- Ingress protection class IP-68
- These pressure gauges are well suited for low pressure measurement.
- The sensing element capsule, is made of 2 Stainless Steel laser-welded diaphragms.



Specifications

Ref. standard	EN 837
Dial	100 mm /150 mm, Aluminium, white background, black markings
Case	SS304 / SS316 with bayonet bezel
Protection	IP-68 (IS:13947 part I / IEC:60529)
Window	Safety glass (Shatter proof / Toughened glass)
Pointer	Light weight, balanced, aluminium
Capsule	SS316 / SS316L (made of two diaphragms laser-welded)
Socket	SS316 / SS316L
Movement	Fine
Connection	1/2"NPT (M) as standard (other optional)
Range	Refer table- 2
Accuracy	$\pm 1\%$ FSD
Over range	110% FSD Standard, Other on request
Zero reset	Provided
Blow out disc	Provided (on top)
Optional	NACE Compliance

Table 2

Range in mm WC
0-60
0-100
0-160
0-250
0-400
0-500
0-600
0-750
0-1000
0-1600
0-2000
0-2500
0-4000
0-6000
(-)25 to (+)25
(-)40 to (+)60
(-)200 to (+)200
(-)100 to (+)100

Special combination for compound ranges available, within the above span

Ordering Information

MODEL : CSPG



MOUNTING

- V Bottom Entry, Local Mounting
- C Back Entry, Local Mounting
- S Bottom Entry, Surface Mounting
- P Back Entry, Flush Panel Mounting
- Y Bottom Entry, 2" Pipe Mounting

DIAL

10 - 100 mm 15 - 150 mm

CASE

S4 SS304
S6 SS316

CAPSULE

S SS316
L SS316L

SOCKET

S SS316
L SS316L

CONNECTION			
SIZE	TYPE	MALE / FEMALE	METRIC THREADS
6	1/4"	NT NPT	M Male
10	3/8"	BP BSP	F Female
15	1/2"	BT BSPT	
20	3/4"	PF PF	
25	1"	GS Gas	
32	1.1/4"	NS NPS	
40	1.1/2"		

OPTION

- C Colour band
- CE CE Certificate
- D Dual Scale
- E External zero reset
- L Nil
- N NACE
- O O₂ Cleaning
- SF Solid Front Case
- BB Back Blow out Disc
- X Accessory - Refer Catalogue ACC

UNIT

- A kg/cm²(g)
- B Bar(g)
- C PSI(g)
- D kPa(g)
- E mmHg(g)
- F mmWC(g)
- G mBar(g)
- X Please Specify

RANGE

Refer Table 2

The recommendations made in this catalogue are to be used as intended guide. No guarantee of material can be undertaken since other factors may affect the performance. We reserve the right to change the specifications mentioned in this catalogue without any notice as improvements & development is a continuous process at Pyrosales. Responsibility of typographical errors is specifically disclaimed.